




# CoroCAM 6D

ECONOMICAL DAYLIGHT CORONA IMAGING CAMERA

amperis

[www.amperis.com](http://www.amperis.com)

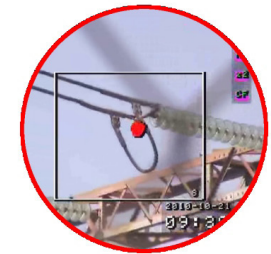
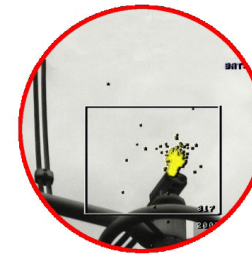
 AMPERIS PRODUCTS S.L.  
Agricultura, 34  
27003, Lugo, Spain

 **Contact**

+T [+34] 982 20 99 20 | F [+34] 982 20 99 11  
[info@amperis.com](mailto:info@amperis.com) | [www.amperis.com](http://www.amperis.com)

- The CoroCAM 6D is a re-development of the CoroCAM Solar Blind UVc Imaging System with an emphasis on cost reduction through innovative design.
- Sensitivity and optical performance was retained by using the same optical and sensor components as the successful CoroCAM 504, modernised electronics was added to reduce weight and size.
- The in-built Colour LCD Display (640x480 pixel) is optimized for use in daylight and has a wide viewing angle.
- A keypad with large buttons for easy operation (even with gloved hands) is positioned on the upper surface.
- Image, Video and Audio recordings can be saved onboard on a SD Card & download via USB. High quality video can be streamed to an external recorder via composite output.
- The standard onboard batteries can easily be exchanged.
- All these features have been integrated into a lightweight, robust system for visualizing UVc discharges from Corona, Arcing and Sparking

Daylight UVc & Visible Channel Camera  
Onboard Still Imaging and Video Recording  
UV Photon Counting  
Lightweight & Robust Design  
Easy Operation & Data Download  
Bright Colour VGA LCD Display  
Low Noise Highly Sensitive Detector  
Wide Field Of View with 10x Optical Zoom



### **Applications:**

- Transmission Line Inspection
- Substation Inspection
- Handheld Airborne Inspection
- Generator and Motor Winding
- Inspections
- Distribution Line Inspection
- HV Electrical Component Inspection
- by OEM Manufacturers
- High Voltage Panel Inspection

[www.amperis.com](http://www.amperis.com)

# SYSTEM SPECIFICA

Specifications subject to change without notice.

## Combined Output

Optical System	Video Output	Composite
	Format	PAL/NTSC Available
	Optical Channels	Visible and Ultra Violet channels Separate or overlaid
	Focus Type	Automatic , manual override
	Focus Range	2m to Infinity
	Window aperture	Ø= 62 mm

## Ultraviolet Channel

Image type	Monochrome video
Sensitivity	3x10 <sup>-18</sup> Watt/cm <sup>2</sup> Typical
Spectrum	UV 240 – 280 nm
Field of View	8° Horizontal x 6° V ertical
Zoom F actor	1x
Update Rate	50 Hz max
Focus type	Auto slaved to visible, manual

## Visible Channel

Type	Colour Video, full function
Sensitivity @ F ull frame rate	0.25 Lux min
Field of View	Default synchronised with UV channel
Zoom F actor	10 x optical

## Operator Interfaces

Application	Handheld or remote controlled
Display	5.7" VGA LCD with LED backlighting Update Rate: 25/30 fps
Status Indicator	LED's
Alarms	Audio, LED & Aux contacts
Control Inputs	Onboard multi pushbutton Remote control unit PC software controlled - option
Audio	Onboard microphone & speaker Headphone output Microphone input

## Power System

Power Consumption	9 watt: Rechargeable Li-Ion
Battery Type	Sony Type L compatible
Battery Run Time	Typical 2 hrs min operation
Battery Location	Onboard, quickly replaceable
Charging	On camera / optional charger
External Supply	9-16V 12V A - Car or mains adapter
Mains Adaptor	110-240V AC 50-60 Hz / 12VDC 3A
Power Modes	Operate, power save, charge
Protection	Reverse polarity, over current, Under voltage

### **Data Storage**

Storage Media	Removable SD Card
Image Format	JPEG compressed still image
Video Storage	MPEG compressed video
Audio	Audio label, wave file
Storage Capacity	1000+ images or >2 hr video per GB Via USB
File download	External via card reader

### **Communication Interfaces**

USB	Image download from SD Card
RS485	Camera control via PC
Auxiliary	Remote control interface RS232 general port 1 Alarm output - option 1 Trigger input - option

### **Mechanical**

Weight	1.7 kg including battery
Size	220mm L x 160mm W x 80mm H
Mounting Points	1/4" Thread tripod mount

### **Processing**

Image Processing	Powerful onboard digital signal Processor for: Visible / UV image & data overlaying UV image enhancements UV image integration Image compression and storage
Date/Time	Real-time clock with battery backup
Temperature	Internal camera temperature
Location	GPS (Optional)
Audio Modes	Microphone input for audio notes
Power Saving	Real-time, integrate, standby , off User Configurable auto standby/off
User Settings / Configuration	Customised operating modes and control functions User definable titles, notes and file names for storage User configured alarm output - option
Software Upgrading	Via SD Card

### **Environmental**

Operating Temp	-15°C to 55°C
Storage Temp	-25°C to 60°C
Humidity	Up to 90%, non condensating
IP rating	IP 54
Physical Protection	Impact absorbing covers Shock protection 25G Vibration 2,5G Protective carry bag
Safety standard	CE ,IEC1010-1

# CoroCAM 6D

## Standard System

- CoroCAM 6D DAYLIGHT UV IMAGER
- AC MAINS ADAPTOR
- 1 x Li-ION BATTERY
- PROTECTIVE CARRY CASE
- OPERATING MANUAL
- CABLE SET (VIDEO & POWER)
- REPORTING SOFTWARE

## Optional Accessories

- REMOTE CONTROL SOFTWARE
- SD STORAGE CARD
- TWIN BATTERY CHARGER



CoroCAM 6D - ECONOMICAL DAYLIGHT CORONA IMAGING CAMERA