

**APD-ANNUNCIATOR** Partial Discharge Alarm System

## APD-ANNUNCIATOR




## APD-ANNUNCIATOR

Remote Partial Discharge activity detector

**amperis**

[www.amperis.com](http://www.amperis.com)

 **AMPERIS PRODUCTS S.L**  
Agricultura,34  
27003, Lugo, España

 **Contacto**

+T [+34] 982 20 99 20 | F [+34] 982 20 99 11  
[info@amperis.com](mailto:info@amperis.com) | [www.amperis.com](http://www.amperis.com)

Remotely detects partial discharge activity inside any energised cabinet using APD-Annunciator system. Probes are installed on the unit under test and will give instant status thus preventing long term damage to your switchgear equipment. Its unique design allows simultaneous TEV and Acoustic detection for optimized results. The flexible sensor's unique design allows for combined directional airborne acoustic and TEV detection.

## APD ANNUNCIATOR MODULE

The APD Annunciator module is equipped with a fast VHF PD detection circuit for TEV detection. It also has an highly sensitive ultrasonic detection circuit for optimal results. Software algorithms are used to discriminate partial discharge from ambient noise. Multiple APD Annunciator modules can be used daisy-chained thus enabling PD detection on many cabinets at the same time. Standard Ethernet cables are used for data transmission and power supply.

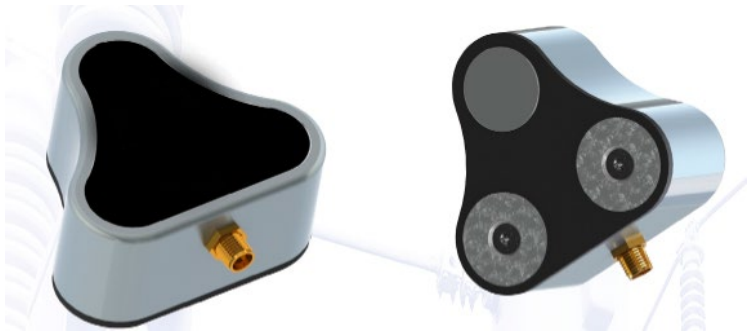


### Features:

- Simultaneous TEV and Acoustic detection
- Easy to install, magnetically held on any metallic cabinet
- Airborne or contact acoustic detection
- Intuitive software
- Open collector and RS485 interface
- Optional cellular module

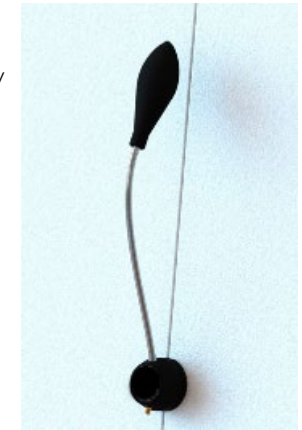
### Technical Specifications:

- **Sensor(s):** Up to three SonoTEV
- **Connector type:** BNC connectors
- **TEV bandwidth:** 10 MHz to 500 MHz
- **Ultrasonic bandwidth:** 38 kHz to 88 kHz ( $\pm 1$ dB)
- **Sensitivity:** 40 dB
- **Power supply:** 90-264 VAC 47-63Hz
- **Memory:** 5 000 entries
- **Wireless alarm:** Optional cellular module



## SONOTEV SENSOR

The SonoTEV sensor is installed directly on the cabinet metallic surface. It detects VHF signals produced by partial discharge activity within the cabinet system using a capacitive coupling technology. The SonoTEV sensor is also equipped with a contact ultrasonic sensor that targets acoustic PD signals. The flexible SonoTEV is equipped with an airborne acoustic sensor mounted on a flexible arm. Its unique flexible arm design allows an infinite adjustment of the probe's orientation.




## APD-ANNUNCIATOR SOFTWARE

The APD-Annunciator software is used to set alarm threshold for each acoustic and TEV channel. It allows displaying graphics representation of the partial discharge activity on a user friendly intuitive interface. The APD Annunciator software is used to retrieve data from the APD Annunciator's USB port where 15 000 entries are saved



[www.amperis.com](http://www.amperis.com)

 AMPERIS PRODUCTS S.L  
Agricultura,34  
27003, Lugo, España

 **Contacto**

+T [+34] 982 20 99 20 | F [+34] 982 20 99 11  
[info@amperis.com](mailto:info@amperis.com) | [www.amperis.com](http://www.amperis.com)