

SF₆ Gas Detection

TC706

HIGHEST RESOLUTION AND ACCURACY
WITH LOW COST




TC706

Could detect following gases:

- * SF₆
- * Ammonia
- * Cyanoacrylate
- * Chlorine dioxide
- * Acetic acid
- * FREON-12
- * Ethylene
- * MEK

amperis

www.amperis.com

 AMPERIS PRODUCTS S.L
Agricultura,34
27003, Lugo, Spain

 Contact

+T [+34] 982 20 99 20 | F [+34] 982 20 99 11
info@amperis.com | www.amperis.com

The TC706 visualizes and pinpoints gas leaks of SF₆, without the need to de-energize high-voltage equipment or shut down the operation. The portable camera also greatly improves operator safety, by detecting emissions at a safe distance, and helps to protect the environment by tracing leaks of environmentally harmful gas.

SF₆ is used in the electric power industry as an insulator and quenching medium for gas-insulated substations and circuit breakers.

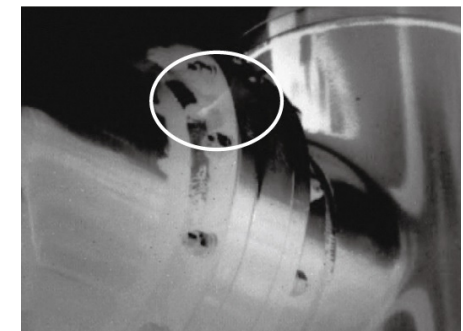
TC706 – Great choice for Gas Leaks Detection



Hand shank and view finder could rotate simultaneously, easy for observation

TC706 Unique Feature:

- Adapt passive thermal imaging technology, could accurately find the leakage point at long distance without power supply shutdown.
- Using Cooled QWIP detector, enjoy superior image quality and accurate temperature measurement.
- Voice and video recording function.
- HD OLED view finder, combined with 5" touch rotating screen, suitable for many on-site using.
- No specific background and auxiliary light needed, suitable for many on-site checking.
- Small size, light weight and easy operation, suitable for single person on-site using.



Examples of leak detection

Technical parameters TC706			
Detector characteristics	Detector type	Cooled QWIP	
	Array size/format	320x256	
Image manage	Field of view/min focus distance	14,5°x10,8°/0,5m or 24°x18°/0,3m	
	Spatial resolutions(IFOV)	0,79mrad or 1,13mrad	
	NETD	≤0,025°C@30°C	
	Frame rate	60Hz	
	Focus	Auto / Manual / Motorize	
	Zoom	1-4x electronic zoom	
	Spectral range	9,8 – 11,2µm – peak 10,55µm	
	CCD	1,3 million CMOS	
Image display	View finder	HD 0,6" color OLED, with zoom	
	LCD	HD 5" color digital touch screen, 800x600	
Measurement	Temperature ranges	-40°C~+500°C	
	Accuracy	±2°C or ±2% of reading, whichever is greater	
	Measurement correction	Auto/Manual	
	Mode	Up to 10 movable spots. Up to 5 movable areas (maximum, minimum and average temperatures). Up to 2 movable lines. Line profile. Isotherm. Temperature difference. Alarm (voice, color)	
	Image control	Color palette	11 palettes changeable (Iron, Rainbow, Grey and Grey inverted, etc)
		Image adjustment	Auto/Manual adjustment of contrast and brightness
	Setup	Date/time, temperature unit °C/°K/F, language	
	Emissivity correction	Variable from 0.01 to 1.0	
	Background temp adjustment	Auto, according to the background temp	
	Atmospheric transmission correction	Automatic correction according to user input object distance, humidity and temperature	
Image Save	Storage Card	8G SD card, storage > 6000	
	Storage Mode	Manual/automatic single-frame image storage, continuous visible, infrared video recording	
	IR image	Single frame	JPEG, 14 bit thermal image with measurement data
		Video	MPEG-4 or 14 bit thermal image with measurement data
	Visual image	Single frame	JPEG
		Video	MPEG-4
	Voice annotation	40s., saved together with the image	
Image improvement	Averaging (S2, S4, S8, S16), spatial filter		
Laser pointer	Power supply	Second level, 1mW/635nm(red)	

Power supply	Battery type	Li-Ion, rechargeable
	Battery operating time	3 hours continuous operation
	Charging system	Intelligent charger or power supply adaptor online charge
Power system	Power saving	Yes
	External power	10 – 15 VDC
Environment	Working temp	-15 °C - +50 °C
	Humidity	≤ 90% non-condensing
	Encapsulation	IP54
Physical characteristics	Weight	3 Kg
	Dimension	335x160x172mm
Interface	External DC Input	Yes
	Audio output	Yes
	Video output	HDMI
	USB 2.0	Image, measurement data and voice transfer to PC