

IRD700 Series

HIGHEST RESOLUTION AND ACCURACY
WITH LOW COST



Rotatable LCD display

IRD700 Series


Temperature ranges up to 2.000°C

Uncooled FPA microbolometer

Optional LCD remote units

amperis

www.amperis.com

 AMPERIS PRODUCTS S.L
Agricultura,34
27003, Lugo, Spain

 Contact

+T [+34] 982 20 99 20 | F [+34] 982 20 99 11
info@amperis.com | www.amperis.com

IRD700 Series offers outstanding image quality and temperature measurement performance in an affordable, rugged and easy to use infrared camera. It works as a professional tool effective in different applications such as power plant, petro chemicals, scientific research, firefighting, building inspection, metallurgy, etc.

IRD700 – Portable High Sensitivity



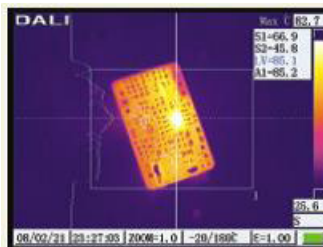
One button operation



Optional LCD remote units



Optional lenses



Line measurement



Area measurement



Audio output and power connector

Technical parameters IRDL700E		
Detector characteristics	Detector type	Uncooled FPA microbolometer
	Array size/format	384×288
Image manage	Field of view/min focus distance	16°×12° /0.5m
	Spatial resolutions(IFOV)	0.88mrad
	Thermal sensitivity	≤0.06°C@30°C
	Frame rate	50/60Hz
	Focus	Manual/Auto
	Electronic zoom	1~8X continuous
	Spectral range	8~14um
	Built-in visible light	300,000 pixels, Pic. in Pic. or full
	Image display	Viewfinder
LCD display		High-resolution color LCD, 640×480
Image adjustment		Auto/manual gain and brightness
Color palette		9 palettes changeable (Iron, rainbow, Grey and Grey inverted, etc.)
Measurement	Temperature ranges	-20°C ~ +500°C, optional up to +1200°C or +2000°C
	Accuracy	±2°C or ±2% of reading, whichever is greater
	Measurement correction	Automatic/manual
	Measurement mode	Up to 10 movable areas (maximum, minimum and average temperatures). Up to 5 movable lines. Line profile. Isotherms. Temperature difference. Alarm (voice, color)
	Setup functions	Date/time, temperature unit, language
	Emissivity correction	Variable from 0.01 to 1.0
	Background temperature correction	Automatic correction according to user input
	Atmospheric transmission correction	Automatic correction according to user input object distance, humidity and temperature
Image storage	Storage Card	Built-in flash memory, CF card(2G), Up to 5000 images
	Storage mode	Automatic/manual single file saving, IR and Visual image link saving
	File format-thermal	JPEG, 14 bit thermal image with measurement data
	Voice annotation	Input via built-in microphone Up to 40 seconds of digital voice per image stored with image
	Image improvement	Averaging (S2, S4, S8, S16) Spatial filter
Laser pointer	Laser pointer	Class 2, 1mw/635nm(red), IEC 60 285

Power supply	Battery type	Li-Ion, rechargeable
	Battery operating time	2 hours continuous operation
	Charging system	Intelligent charger or power supply adaptor(optional) online charge
	Power saving	YES
	External power	10~15V DC
Environment	Operating temperature	-15°C - +50°C
	Encapsulation	IP54
	Humidity	≤90% non-condensing
Physical characteristics	Weight	1.69 kg
	Dimensions	305mm×130mm×135mm
Interface	External DC input	Yes
	Audio output	Yes
	Video output	PAL/NTSC/ VGA
	USB	USB2.0 Image, measurement data transfer